

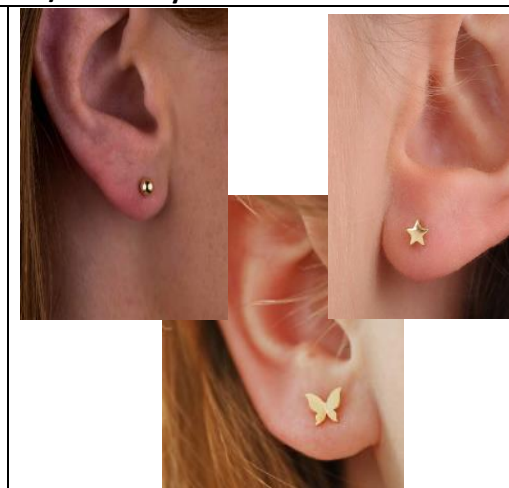


Prince Henry's School Uniform visual guide	
The below table confirms the compulsory elements of the Prince Henry's school uniform, as shown in the images. <b>More detailed information can be found on the School Uniform area of the website.</b>	
<b>Blazer</b>	Navy with PHGS badge
<b>Shirt</b>	Plain white - tailored style with traditional collar, long sleeved (not to be worn with sleeves rolled up) or short-sleeved. The shirt must be long enough to remain tucked in to trousers or skirt at all times.
<b>Tie</b>	Basic school design (see image on <b>left</b> ), with appropriate year coloured stripe. Worn at a suitable length (approximately an A4 piece of paper). <i>Note: Image on the right shows a tie no longer used.</i>
<b>Trousers</b>	Navy – These should be boot cut or tailored, must have a waistband, traditional zip and cover the ankles. Slim, skinny fit or tapered and trousers with invisible/ concealed zips are not allowed.
<b>Skirt</b>	Navy – traditional tailored school skirt. Without pleats and must not be a pull-on Lycra skirt. This should be worn no more than the student's hand's width above or below the knee.
<b>Tights/ Socks</b>	Navy or neutral shade preferred, black is permitted. Socks should be navy or black ankle socks.
<b>Shoes</b>	Black – plain with no logos or decorative elements. Boots are not allowed and footwear must be tailored to fit under the anklebone. Cloth pumps or trainers are not allowed in school.



<b>Hair</b>	Hair colours must be natural. Visible lines/ patterns shaved into the head (including eyebrows) are not allowed. The head must not be fully shaved below a grade 2 (lower grades are permitted at the side and back). Hair accessories should be discreet in style and 1 colour.
<b>Make up</b>	KS3 – No make-up may be worn. KS4 – Discreet make up may be worn. ALL YEARS – No nail varnish may be worn, including acrylic nails.

Accessories/ Jewellery	
<b>Allowed</b>	<p>Watch</p> <p>One Earring per lobe – it must be a small plain gold or silver stud only. The ear lobe should be visible all the way around the stud.</p> <p><i>Examples of acceptable earrings are shown on the right.</i></p>
<b>Not allowed</b>	Body/ facial piercings including nose, eyebrow and tongue (including the use of retainers). Acrylic nails. False eyelashes.



Outdoor wear
Coats, hats, scarves and gloves - are not to be worn in the building.
Denim, non-uniform jumpers, baseball caps and hoodies are NOT allowed anywhere on site.

**Any student not meeting the above expectations should expect to receive sanctions in line with our Positive Discipline policy.**